

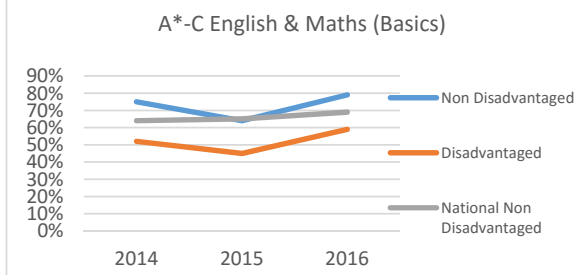
Pupil Premium

Analysis 2016-17



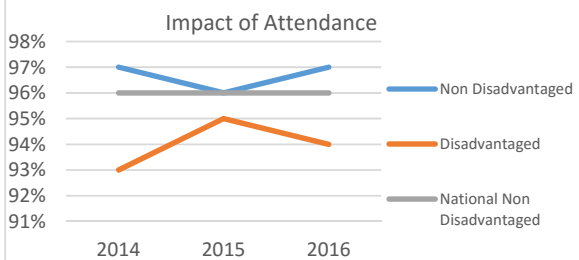
A* - C in English and Maths (Basics)

	2014	2015	2016
Non Disadvantaged	75%	64%	79%
Disadvantaged	52%	45%	59%
National Non Disadvantaged	64%	65%	69%
National Disadvantaged	39%	38%	
School Gap	-23%	-19%	-20%
School Dis to National Non Dis	-12%	-20%	-10%



Attendance Impact (based on FSM)

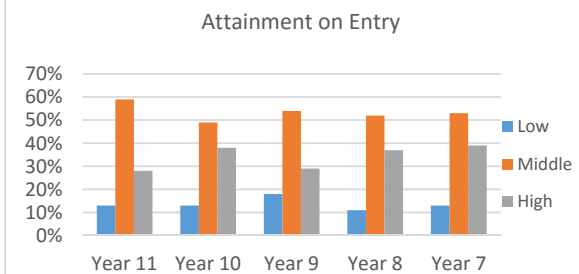
	2014	2015	2016
Non Disadvantaged	97%	96%	97%
Disadvantaged	93%	95%	94%
National Non Disadvantaged	96%	96%	96%
National Disadvantaged	93%	93%	93%



Percentage attainment on entry

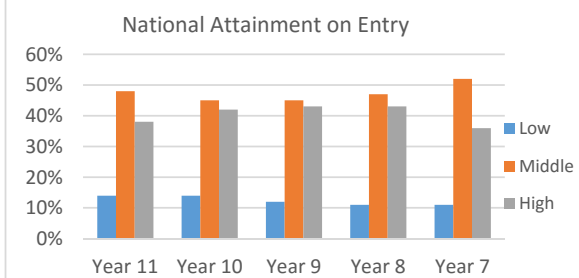
School (Full Cohort)

	Low	Middle	High
Year 11	13%	59%	28%
Year 10	13%	49%	38%
Year 9	18%	54%	29%
Year 8	11%	52%	37%
Year 7	13%	53%	39%



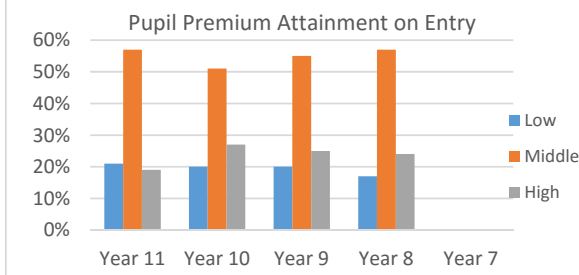
National

	Low	Middle	High
Year 11	14%	48%	38%
Year 10	14%	45%	42%
Year 9	12%	45%	43%
Year 8	11%	47%	43%
Year 7	11%	52%	36%



School Pupil Premium

	Low	Middle	High
Year 11	21%	57%	19%
Year 10	20%	51%	27%
Year 9	20%	55%	25%
Year 8	17%	57%	24%
Year 7			



Progress 8 & Attainment 8 Summary 2016 Leavers

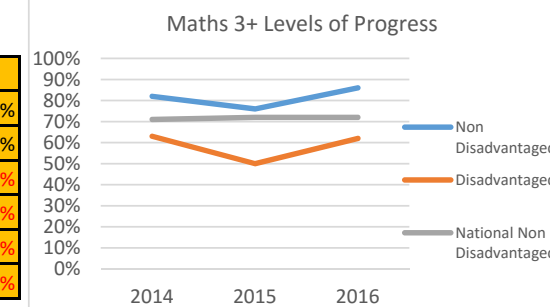
	A8 Score	P8 Score	English	Maths	Ebacc	Open
Non Disadvantaged	58.97	0.51	0.2	0.44	0.31	0.95
Disadvantaged	48.43	0.11	-0.17	0.11	0.15	0.72
Overall	54.82	0.34	0.03	0.2	0.11	0.87
National Non Disadvantaged	52.56		0.03	0.2	0.11	0.87

School Context

Year group	7	8	9	10	11
Number of Students	193	163	150	121	119
Percentage Disadvantaged	39%	41%	44%	46%	50%

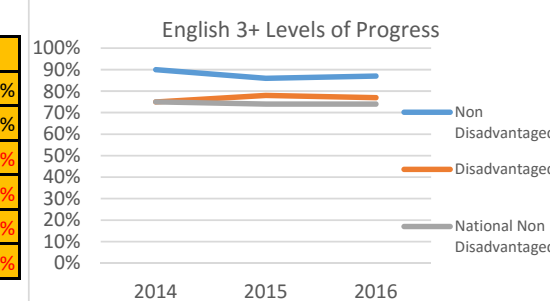
Maths 3+ Levels of Progress

	2014	2015	2016
Non Disadvantaged	82%	76%	86%
Disadvantaged	63%	50%	62%
National Non Disadvantaged	71%	72%	72%
National Disadvantaged	48%	49%	49%
School Gap	-19%	-26%	-24%
School Dis to National Non Dis	-8%	-22%	-10%



English 3+ Levels of Progress

	2014	2015	2016
Non Disadvantaged	90%	86%	87%
Disadvantaged	75%	78%	77%
National Non Disadvantaged	75%	74%	74%
National Disadvantaged	58%	57%	57%
School Gap	-15%	-8%	-10%
School Dis to National Non Dis	0%	-4%	3%



Expenditure to Date	Purpose	Cost
Improving academic outcomes		
Three Higher Level Teaching Assistants	Increase teaching capacity to support small group and 1:1 intervention.	£51,800
Attendance Officer	Additional focused work on pupil premium students.	£25,400
Extra set in English and Maths	Reduced class sizes	£20,000
1:1 interventions	To allow personalised intervention to be developed for pupil premium students.	£6000
Additional KS4 English and Maths intervention.	To improve academic outcomes for pupil premium students within core subjects.	£34,000
Extra revision sessions, including half term study support	To improve academic outcomes for pupil premium students within core subjects.	£5000
Subsidised Music lessons	To promote additional enrichment opportunities for pupil premium students.	£1000
Rewards for attainment and attendance	To raise aspirations and reward achievement	£5000
Improving Literacy		
Development of a bespoke intervention programme at KS3.	To improve standards of literacy and numeracy for pupil premium students.	£6500
Pastoral and whole-pupil support		
Inclusion Manager and Pupil Welfare Officer	To provide additional support for vulnerable students and families.	£50625
One HLTA as transition tutor/additional Year Leader.	To increase pastoral capacity within the Year Leader team to support pupil premium students.	£25,050
Pastoral Care in Adolescent Mental Health	To promote student wellbeing in school.	£5570
Support for transition work	Funding to provide transition activities in primary schools and at Parkside.	£4600
Counsellor	Additional counselling support secured for all pupil premium students.	£11490
Summer school		£21600
Alternative Provision at Delta School.	To provide effective alternative education provided for a targeted group of KS4 pupils.	£6000
Pupil support including hardship fund	To support students purchasing uniform, equipment, attending educational visits etc	£7410
Total Cost		£287,045